

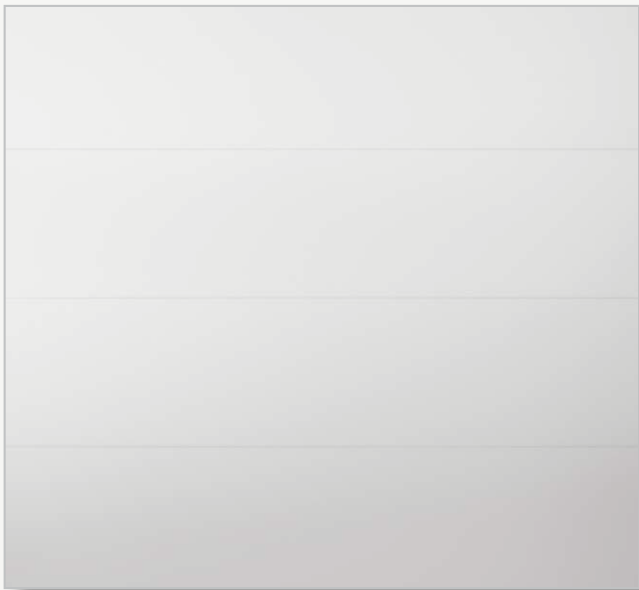
3650

INSULATED SANDWICH

doorLink
Manufacturing, Inc.®

3 LAYER
SANDWICH CONSTRUCTION

FLUSH PANEL



3650

PAINT	EFFICIENCY
1.0 MIL	10.25 R-VALUE
INTERIOR	
STEEL SKIN	

2" thick insulated steel sandwich panel constructed of top quality materials. Flush panel with deep woodgrain texture and two coat prefinished paint system all combine to enhance the beauty of your home.

Configure your door on our website at

www.DoorLinkMfg.com

STANDARD FEATURES

26 GAUGE METAL

Hot dipped galvanized steel construction provides superior strength and durability.

1.0 MIL PAINT SYSTEM

Includes .25 mil rust inhibiting primer and .75 mil exterior top coat that resists fading and chalking while providing consistent color from panel to panel, and long life.

20 GAUGE HOT DIPPED STEEL HINGE PLATES

Galvanized steel hinge plates run the full height of each section at all hinge locations to facilitate the attachment of hinges, handles, struts and step plates.

TONGUE AND GROOVE MEETING RAILS

For superior strength and better sealing against wind, rain and snow.

RIGID ALUMINUM RETAINER

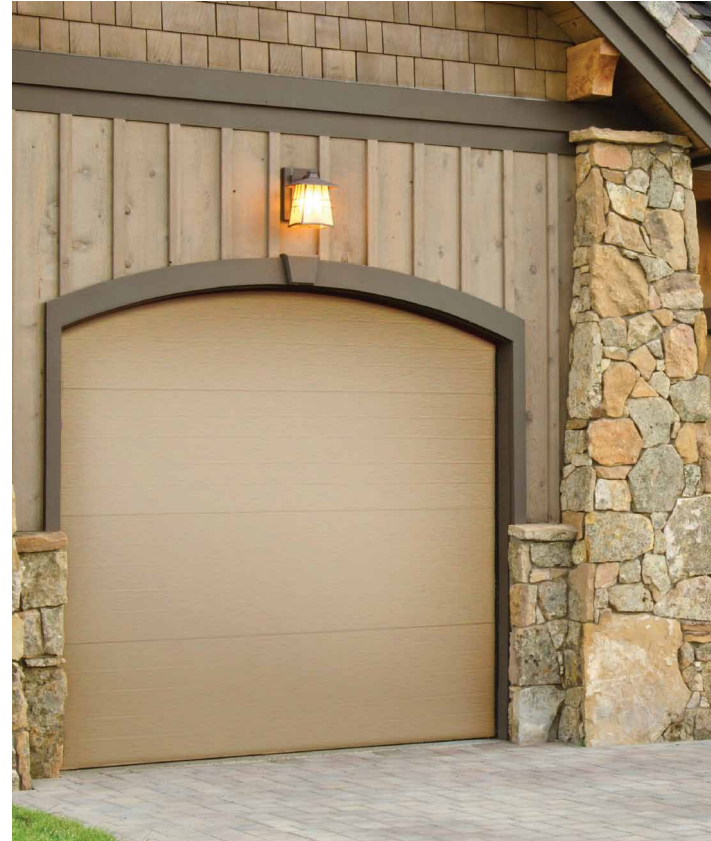
Provides added strength while securing replaceable u-shaped bottom weatherstrip to help keep the elements out.

R VALUE 10.25 INSULATION

Sandwich type construction with polystyrene insulation pressure bonded between two sheets of 26 gauge hot dipped galvanized steel enhances your home's energy savings, makes your door operation quieter, and reduces exterior noise in your garage.

CFC FREE EXPANDED POLYSTYRENE

Environmentally friendly insulation that will not degrade with vibration or time.



SIZES AVAILABLE

DOOR WIDTH

8', 9', 10', 12', 14', 15', 16', 17', 18', 20', 22', 24'

HEIGHTS AVAILABLE:

6'6" 6'9" 7'0" 7'6" 7'9" 8'0"

COLORS



WHITE



SANDSTONE



ALMOND



BROWN



DESERT TAN

BROCHURE COLOR
MAY VARY FROM
ACTUAL PRODUCT.

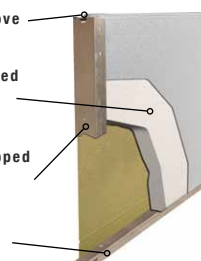
CONSTRUCTION

Tongue and groove meeting rails.

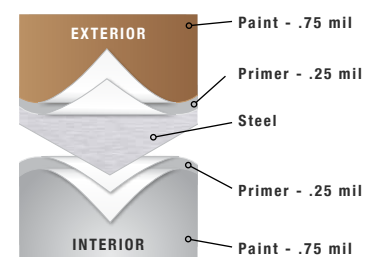
CFC free expanded polystyrene insulation.

20 gauge hot dipped galvanized steel end cap.

Rigid aluminum retainer.



PAINT LAYERS



Your Local Authorized Dealer:

To view this product online:

